



# **Uplink Remote 2.1 Mobile App Guide**

**RG1126**

**Revision 1**

**February 25, 2015**

## Contents

Introduction .....	1
Getting Started.....	1
Prerequisite Reading.....	1
Scope.....	1
Installation .....	1
Mobile App Icon.....	2
Login Screen.....	3
Using the App.....	4
Mobile App Controls .....	4
Home Screen.....	5
Video .....	6
Controls.....	7
Event History.....	8
Weather .....	9
Accounts.....	10
Revision History .....	10

## Table of Figures

Figure 1 – Mobile App Icon .....	2
Figure 2 – Login Screen .....	3
Figure 3 – Main Interface.....	4
Figure 4 - Controls.....	4
Figure 5 – Home Button and Home Screen .....	5
Figure 6 – Video Button and Video Screen .....	6
Figure 7 – Home Automation Control Button and Screen.....	7
Figure 8 – Event History Button and Screen .....	8
Figure 9 – Weather Button and Screen.....	9
Figure 10 – Accounts Button and Screen.....	10

## **Introduction**

Uplink Remote 2.1 offers a mobile application for Android and iPhone devices. It consists of a simplified user interface that delivers a fast and effective way to view an asset's last status, drill down to map level detail and view the most recent history of a device.

## **Getting Started**

Vestibulum vitae tempus leo. Etiam eu ultrices leo. Nulla magna metus, porta in dignissim vel, cursus non ante. Proin id commodo velit. Aenean vitae felis sollicitudin, scelerisque dolor non, vestibulum leo. Nam quis augue sit amet diam dapibus rutrum. Cras varius dui elit, ac dapibus felis dignissim eget. Nunc a fringilla diam.

## **Prerequisite Reading**

In order to fully understand the information contained in this document, the following documents should be read first:

***UM1089 - Uplink Remote 2.1 User Guide***

## **Scope**

This guide is intended to provide instructions for using the FASTrack Fleet mobile app.

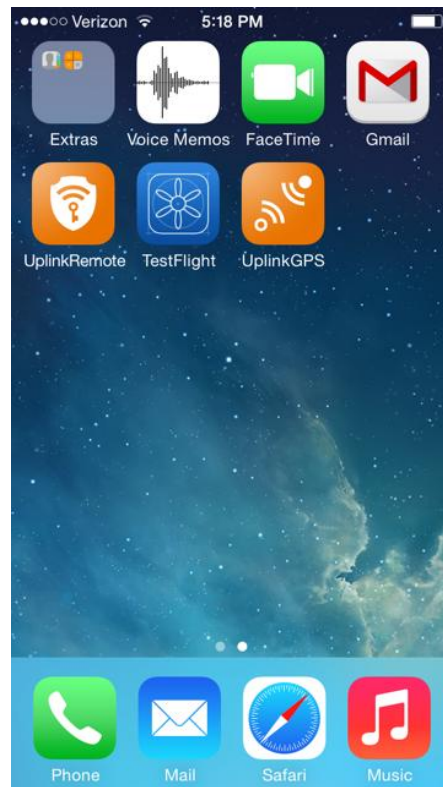
## **Installation**

The Uplink Remote 2.1 mobile app is available as a free download from the Apple and Android app stores. Download the application from the relevant store, and install it as you would any other mobile application.

## Mobile App Icon

The following image displays the **Uplink Remote 2.1 Mobile App** icon.

Uplink Remote  
icon



**Figure 1 – Mobile App Icon**

Tap the **Uplink Remote** icon to launch the application.

## Login Screen

The following image displays the mobile app login screen. Use your normal **Uplink Remote** login credentials to login. Tap the **Sign In** button.

**Note:** The first time you log in, you will need to accept the **Terms and Conditions**.

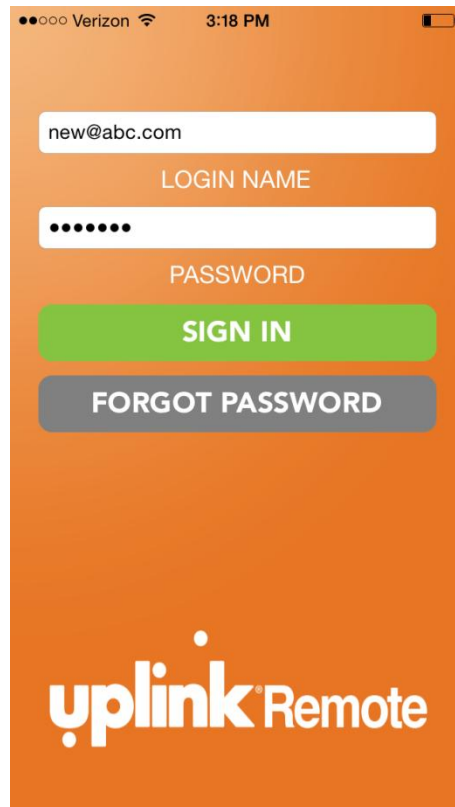


Figure 2 – Login Screen

## Using the App

The following image displays the home screen of the **Uplink Remote** mobile app. To arm your security system, tap the **Arm Stay** or **Arm Away** button.

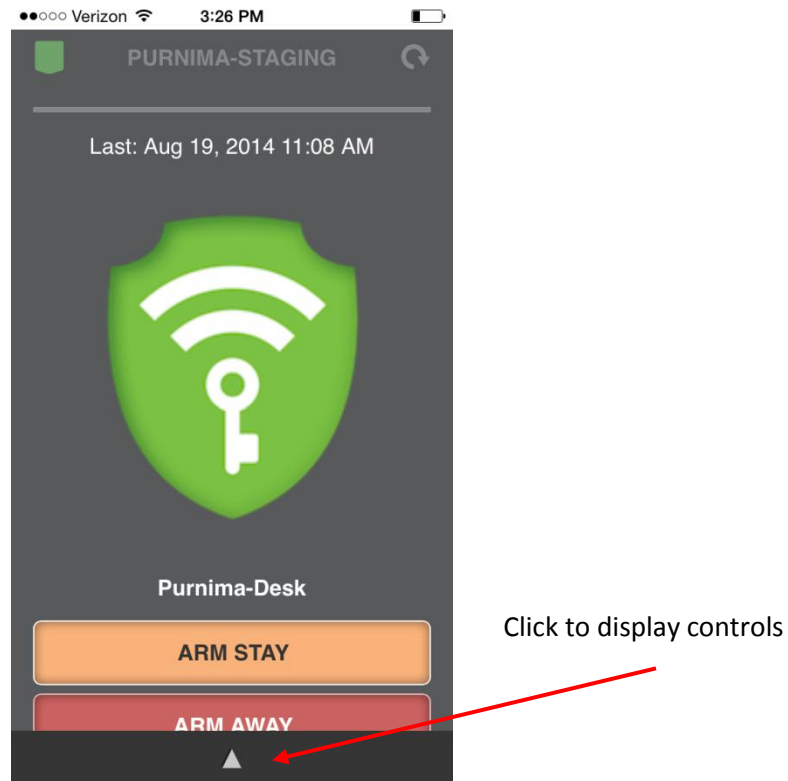


Figure 3 – Main Interface

To access the additional controls, click the triangle at the bottom of the screen.

## Mobile App Controls

The following image displays the controls available on the mobile app. They are very similar to the controls on the web interface.



Figure 4 - Controls

## Home Screen

The **Home** button returns you to the main screen of the mobile app.

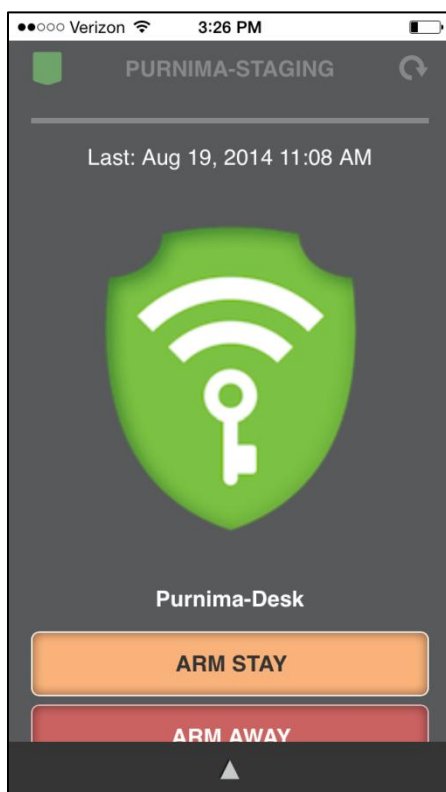
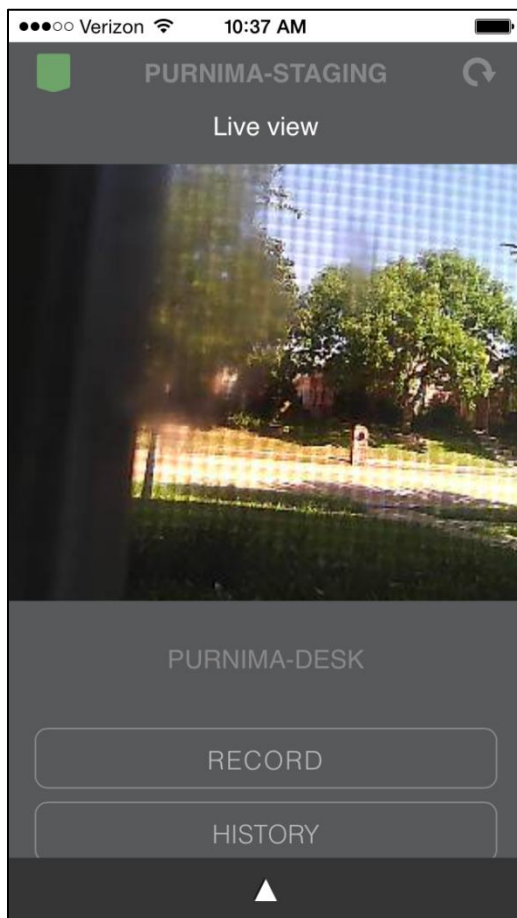


Figure 5 – Home Button and Home Screen

## Video

The **Video** button allows you to view a live view of the video cameras that are installed on your security system. Depending upon the video plan you are subscribing to, you can also record video and view a history of recorded video.

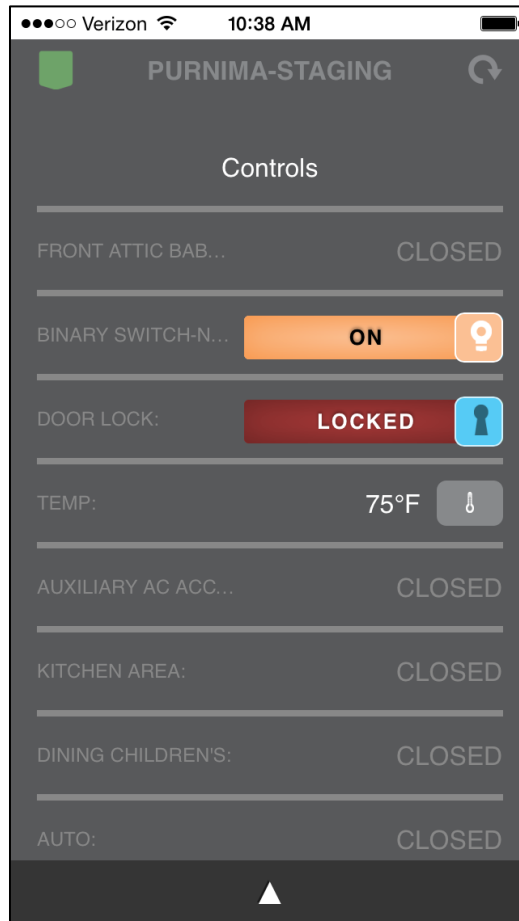


**Figure 6 – Video Button and Video Screen**



## Controls

The **Controls** screen allows you to make changes to the status of your home automation devices. The following image shows an example of a thermostat, door lock, etc.



**Figure 7 – Home Automation Control Button and Screen**

Event History

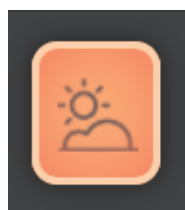
The **Event History** screen displays the history of your security system.



Figure 8 – Event History Button and Screen

## Weather

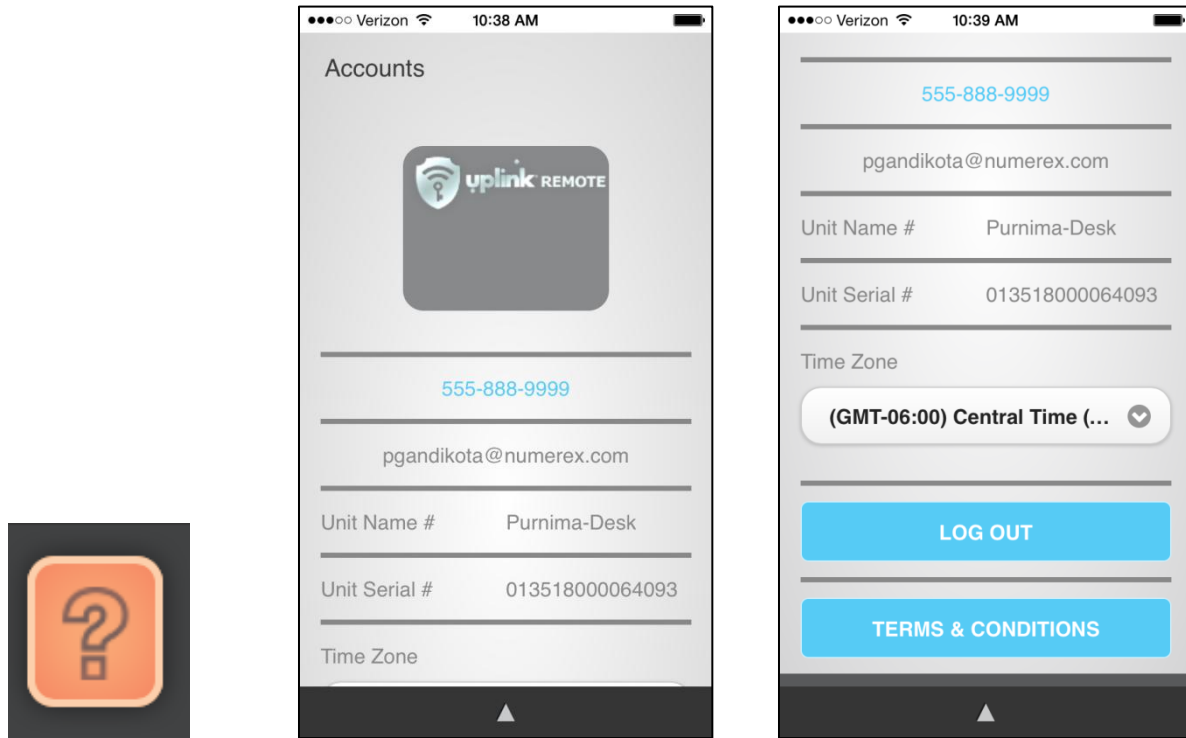
The **Weather** screen displays the local weather conditions. Tap the **Forecast** button, to view the local weather forecast.



**Figure 9 – Weather Button and Screen**

## Accounts

The **Accounts** page displays information regarding your **Uplink Remote** account. No information can be changed on this page. You can also log out of the mobile app from the **Accounts** page.



**Figure 10 – Accounts Button and Screen**

## Revision History

Rev. #	Change Made	Date	Editor
1	Initial Release	2/25/2015	DWindsor